

Solution for eFiscalization of self-charging machines

## MS-EF

### Characteristics



Cortex-A7H.265/HEVC4K

- ◆ H3 Quad-core
- ◆ 10/100 Ethernet RJ45
- ◆ IP 25
- ◆ DIN installation
- ◆ ESIR i LPFR
- ◆ MDB, Executive(Protocol A)
- ◆ WIFI, GSM 2G 3G 4G

### Description

**Solution** for eFiscalization of self-charging machines. View QR code accounts via cloud platforms without the need for printing. Remote control of a vending machine via the Internet.

CCtalk, MDB, Executive interface. ESIR, LPFR or VPFR within the system. Possibility to connect an external printer or display a QR account on the local display. Management via WEB interface and application. Real-time remote monitoring of the integrity of the entire system. Data transfer via WIFI connection or GSM 2G 3G 4G.

1

---

Inova Tech d.o.o.  
Ratka Mitrovica 130, 11090 Belgrade, tel: +381 11 63 100 26

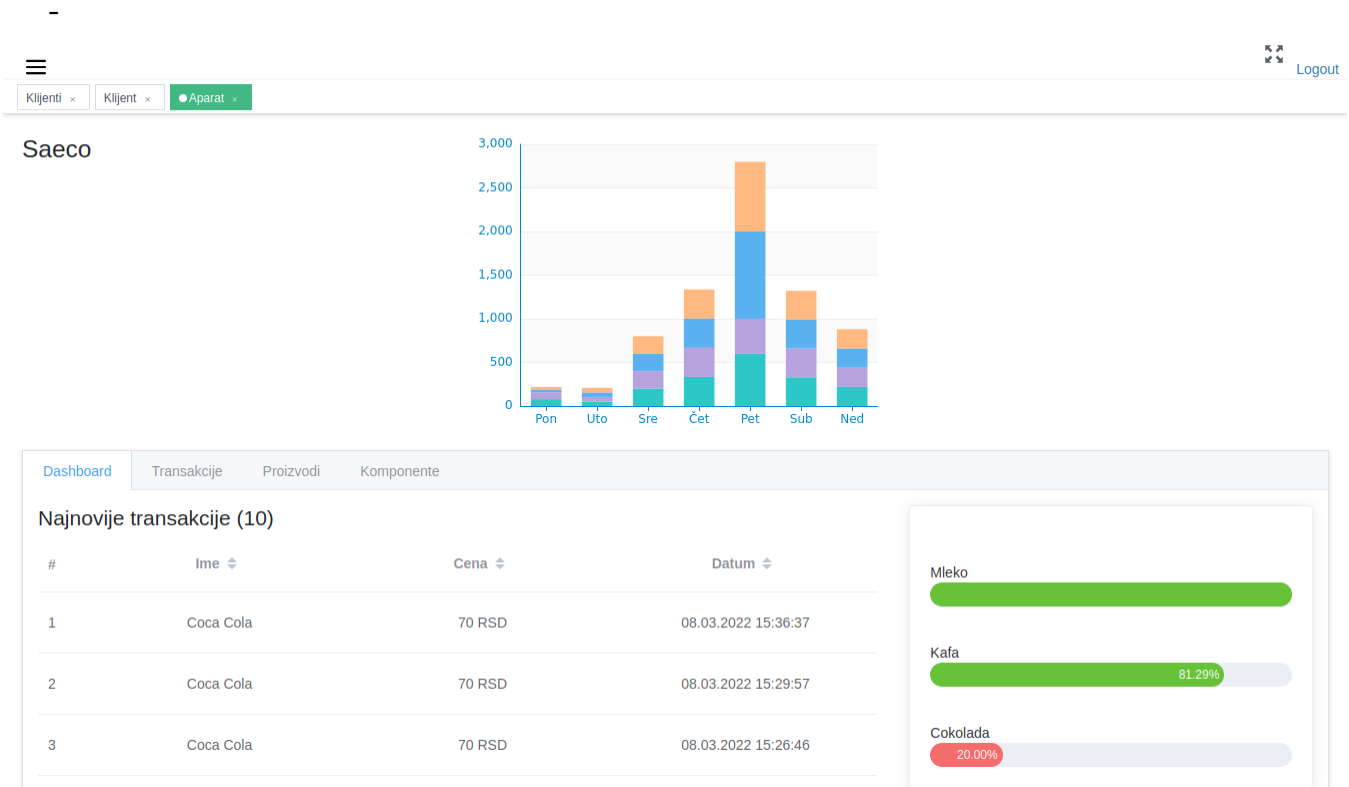
office@inovatechit.com  
[www.inovatechit.com](http://www.inovatechit.com)

**Legal notice**

Reproduction, transfer, distribution or storage of part or all of the contents in this document in any form without the prior written permission is prohibited. All rights reserved. All trademarks mentioned herein belong to their respective owners.

Copyright © 2021 Inova Tech

## Software features



Picture 1

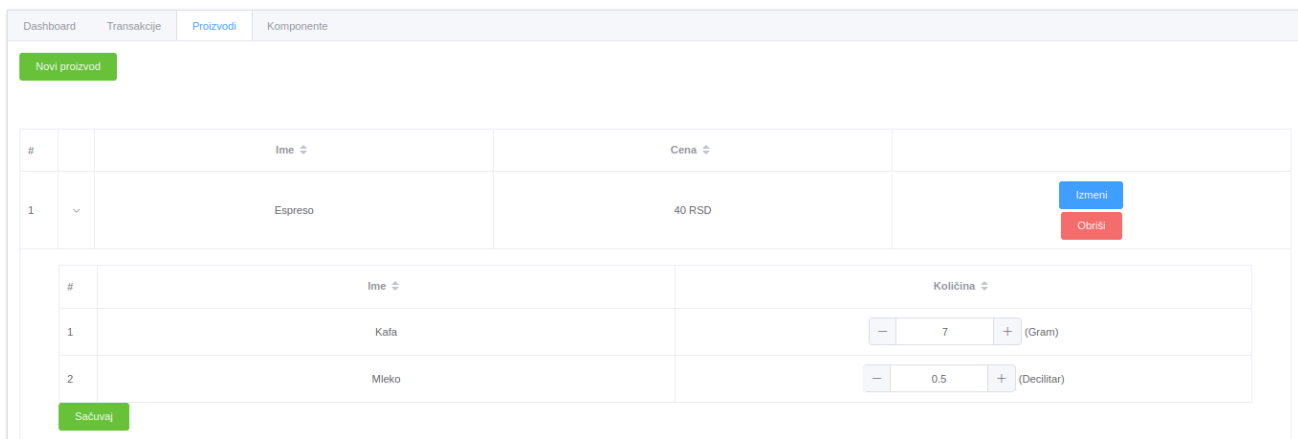
- Transaction overview
- Overview of recipe components (milk, chocolate, coffee ( ))
- Sales statistics by items

**Legal notice**

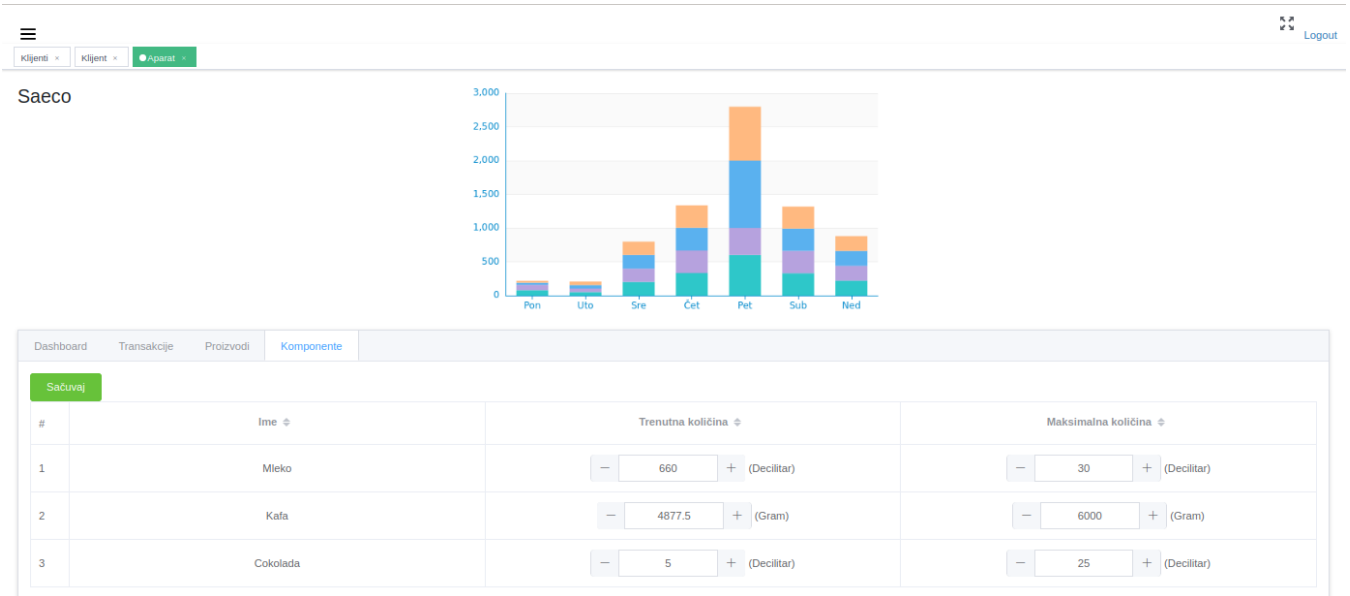


Picture 2

- Product modification in the appliance
- Payment via user mobile application, Loyalty
- Price adjustment, recipes



Picture 3



Picture 4

- Adjusting recipe components
- Supplement status
- Charger access

**Legal notice**

Reproduction, transfer, distribution or storage of part or all of the contents in this document in any form without the prior written permission is prohibited. All rights reserved. All trademarks mentioned herein belong to their respective owners.  
Copyright © 2021 Inova Tech

## Specification

Dimension: length 85 mm, width 85 mm,

Supply voltage: 5V DC 2A

Internal memory: 8GB EMMC Flash

Protocols: TCP/IP, UDP ARP, DHCP, BOOTP, SNMP, RIP, RARP, HTTP, TFTP, ICMP

External memory: TF card (Max. 32GB) / MMC card slot

Serial interface: RS232 \*opciono Cctalk, MDB, Executive (Protocol A)

Temperature: -30°C do +70 °C

Ethernet interfejs: IEEE 802.3, IEEE 802.3u 10/100BASE-TX standard 10/100BASE-TX RJ45

Setting: Web Interface, Web CLI

Telnet default IP 192.168.1.61

Mali400MP2 GPU @600MHz supports OpenGL ES 2.0

IP 25

Web OTA Wireless Upgrade

SDRAM 1GB DDR3

3 USB 2.0 HOST, 1 USB 2.0 OTG